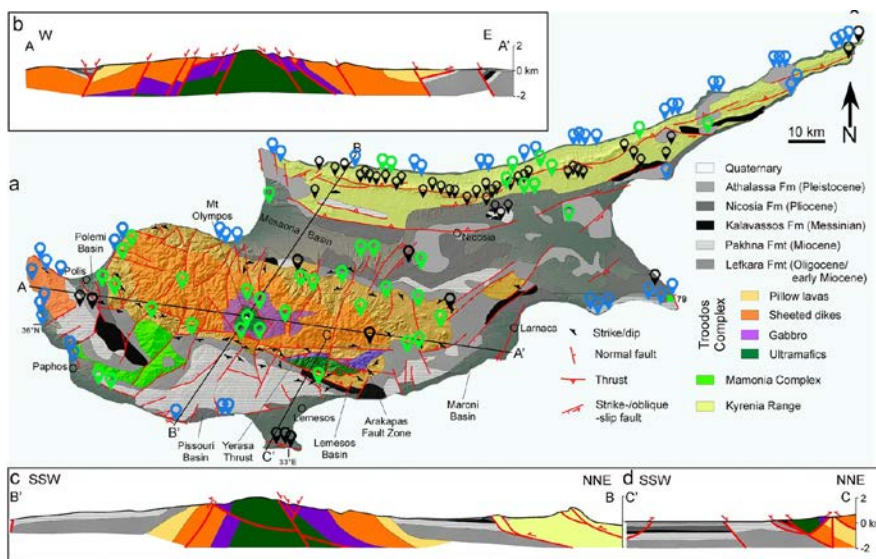




# pocket card Cyprus

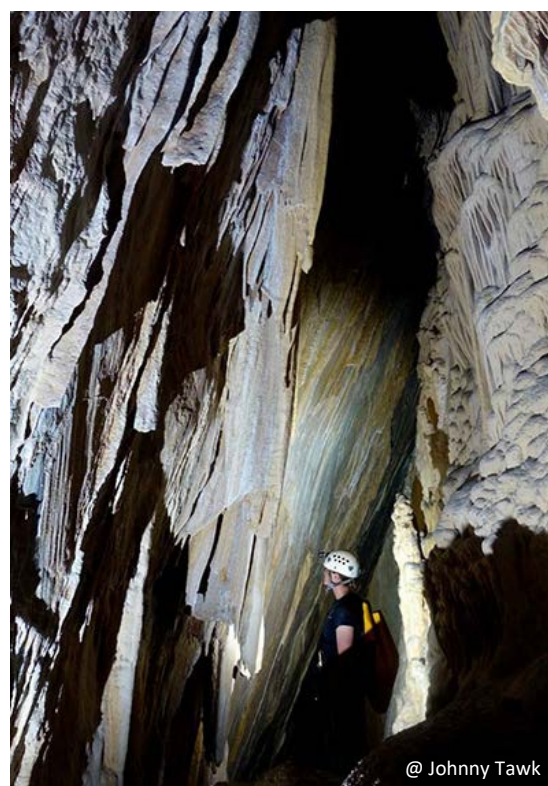
The largest portion of Cyprus' limestone karst exists in the Kyrenia Range along the northern shore of the island. Longest and deepest caves are found near the Pentadaktylos formation in the middle of the range. The Kyrenia region was subject to a rapid uplift and aerial exposure since the Upper Pliocene.



Most caves in of its caves. the Kyrenia Range are therefore of tectonic origin, not dissolutional karst, comprising original rounded voids that were never under phreatic conditions. Cyprus' semi-arid climate and limited underground recharge (4 L/s/km<sup>2</sup>) further limit the possibility of phreatic conditions in the formation

- Caves total : 350**
- Marine caves total: 70**
- Artificial caves total: 50**
- Number of speleologists: ~30**
- Speleological groups and organizations: 2**

Most larger caves		
Name	Length	Depth
Fig Tree Cave	375 m	-13 m
Pentadactylos Pot Hole	300 m	-250 m
Hot cave	168 m	-42 m
Varathro Akama	110 m	- 80 m
Smokey Cave	93 m	-35 m



Info card coordinator :  
 Salih Gücel / [sgucel@hotmail.com](mailto:sgucel@hotmail.com)  
 Kyriakos Georgiou / [georgiou.k@unic.ac.cy](mailto:georgiou.k@unic.ac.cy)